

ECE451 - TOOLS

Ansys Electronics Desktop and Keysight ADS will be provided via Citrix environment by Engineering IT Shared Services.

Follow [this](#) link to set up the Citrix environment if you are first-time users then launch Ansys HFSS and Keysight ADS via Citrix (note: it only works if you are in the University network either directly or via VPN).

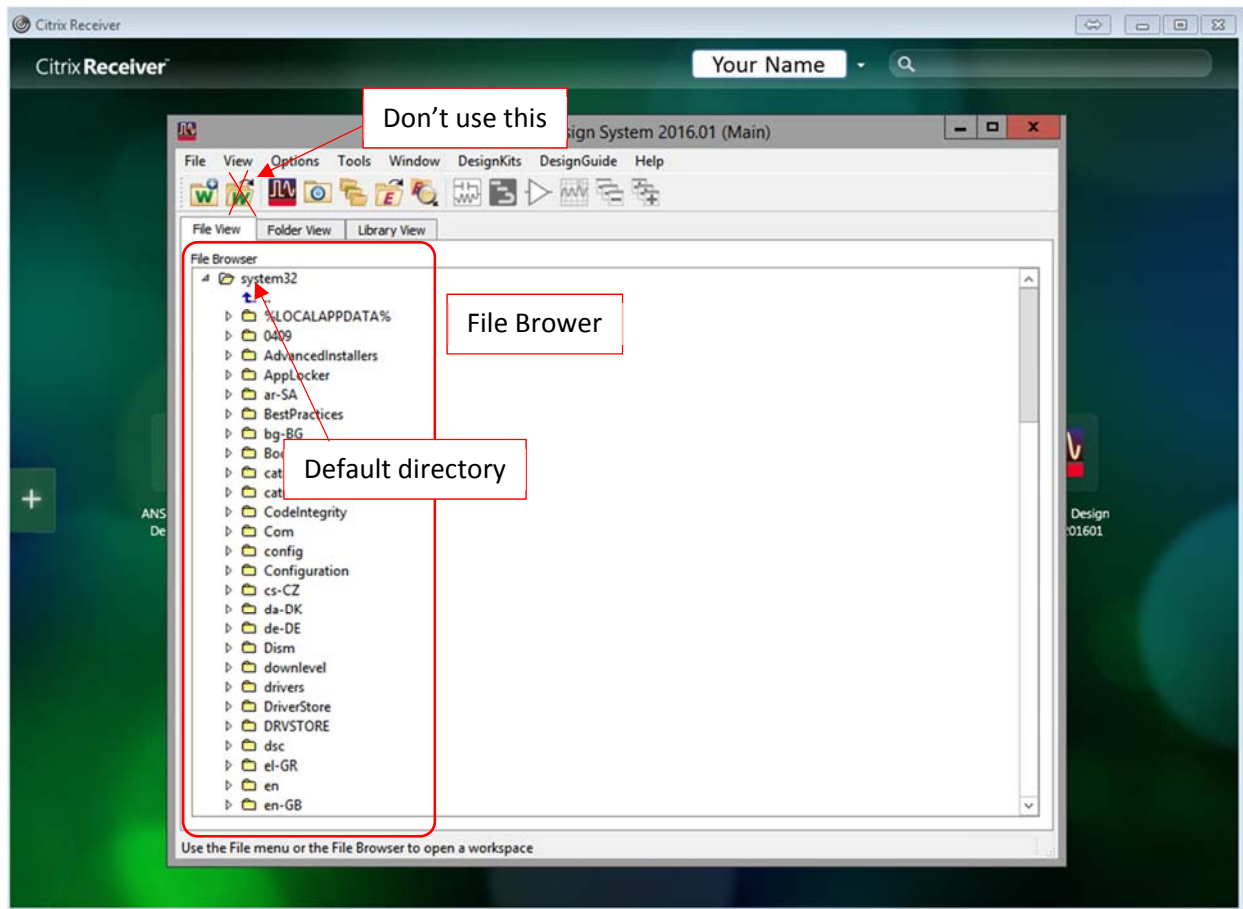
For your own convenience, please read the following carefully.

Software run on your computer via Citrix normally can access data both on the Citrix server as well as the client (which is your computer).

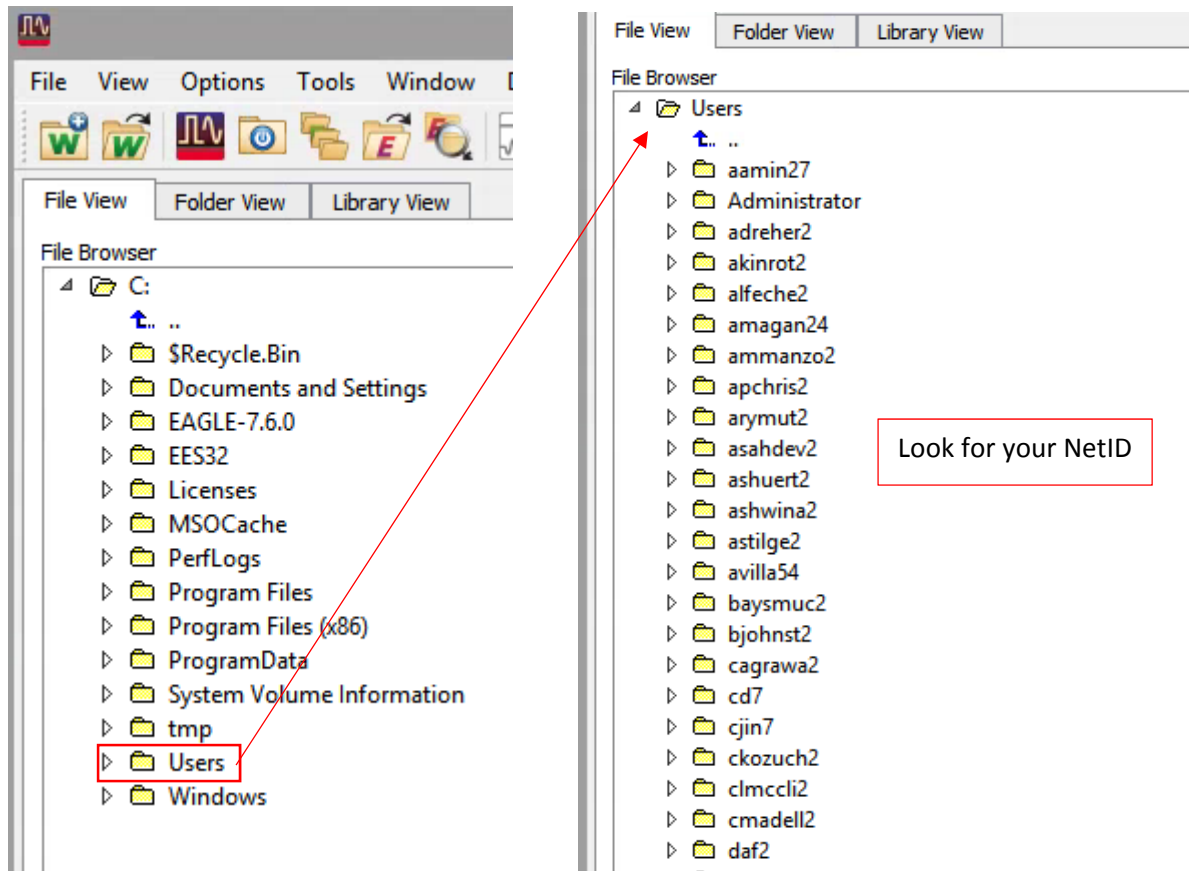
However, they suffer from some bugs. Consequently, **we recommend you to only create your ADS workspaces**, which can be later copied to your local machine for submission or personal storage for future uses, **on the Citrix server**.

In the following, we use ADS as an example to illustrate the best practice when using ADS and Ansys via Citrix

Do not try to create ADS workspaces on your local machine and have ADS open it. It will malfunction and you won't be able to work with it. Moreover, **do not** try to use the File Menu to open the desired working directory, it will not work properly. Use the **File Browser** to move to the desired working directory.

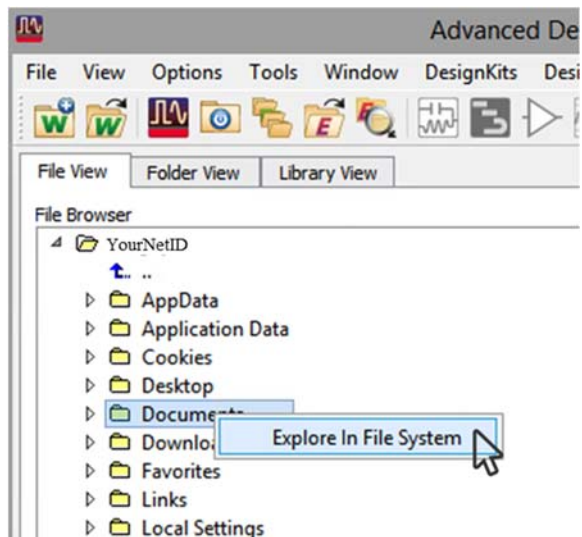


Use the **File Browser**, go to *C:\Users\YourNetID*

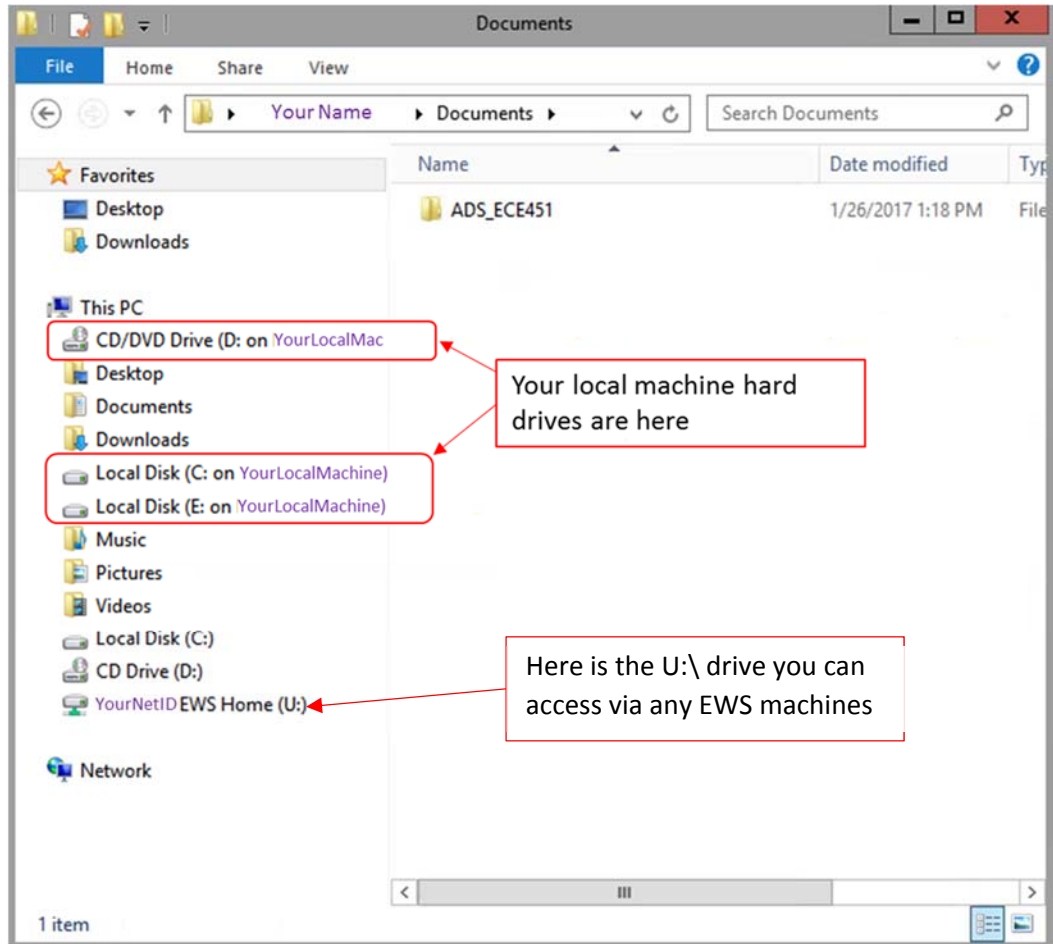


You should create a “master” folder to contain all of workspaces you will create in this course. The recommended directory would be `C:\Users\YourNetID\Documents\ADS_ECE451\`. **Do not** choose a directory with white space in the name (such as “~\My Documents”), ADS does not allow it. Do not even try to browse into such directories.

If you want, you can create a new folder by first opening the File Explorer of the Citrix machine.



You will get a File Explorer that looks like the following, where you can create new folders



Now, inside `C:\Users\YourNetID\Documents\ADS_ECE451\`, you can start creating ADS workspaces. Open the File Explorer to copy/move ADS workspaces that you want to transfer to your local machine.

You can also access your EWS drive from your local machine by network drive mapping (aka sftp) by following instructions [here](#).

About Ansys, you can open and run the *.aedt files on your local machine normally. However, if Ansys is abruptly closed (such as it is frozen and you have to kill the process, or if the VPN has expired, or Citrix kills it because you are inactive for a long time), your design file will be corrupted and can no longer be opened. Be very cautious if you decide to do so.